

Larry Smith-Vaniz, Broker
601.720.5733
lsv@lsvrealty.com



James Fox, Broker Associate
769.798.1116
jfox@lsvrealty.com

280 Acres

\$1,095,000.00

Tank Road Close to Terry, just west of Midway Road, Hinds County

Property Type: Land- Recreational/ Timber/ Residential Potential

DETAILS:

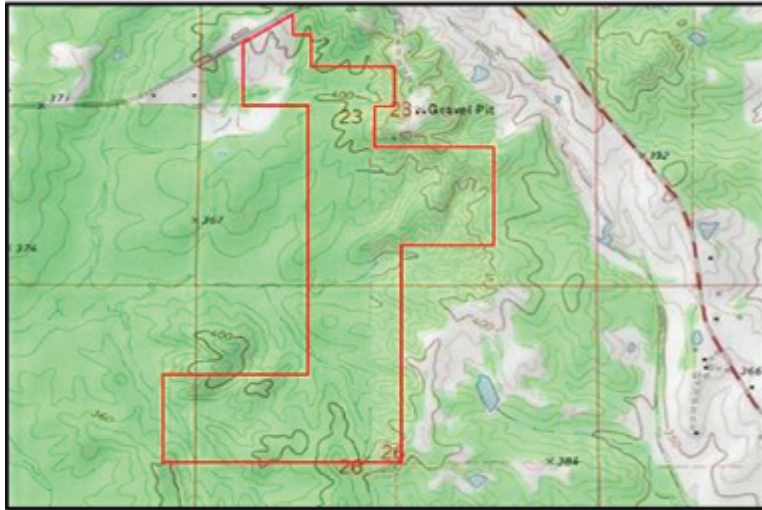
- Owner/Broker
- Excellent timber...primarily Plantation Pine planted in 1972, 1974, 1978, 1983 & 1986 (12 +/- acres cut & re-planted in 2005)
- Some hardwood timber
- Timber previously managed by Molpus Timber Management
- Interior roads through-out and established areas for food plots
- Property recently surveyed
- Deer, turkeys, and other small game

Larry Smith-Vaniz, Broker
601.720.5733
lsv@lsvrealty.com

Larry
Smith-Vaniz

James Fox, Broker Associate
769.798.1116
jfox@lsvrealty.com

280 Acres



Larry Smith-Vaniz, Broker
601.720.5733
lsv@lsvrealty.com

Larry
Smith-Vaniz

James Fox, Broker Associate
769.798.1116
jfox@lsvrealty.com

280 Acres

